



GMT MONTHLY MEMBERSHIP PROGRESS REPORT

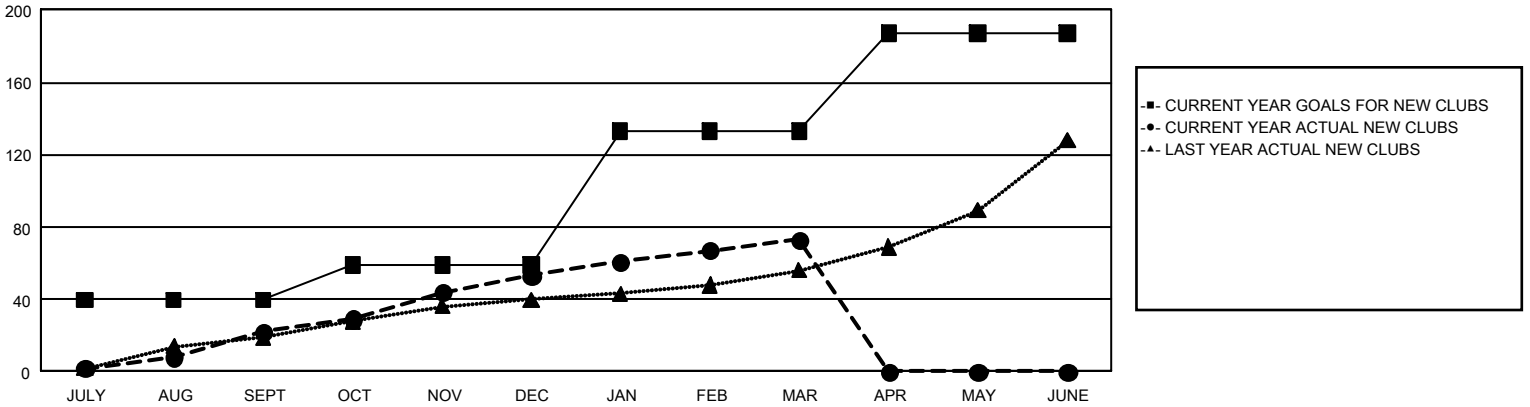
GAT Constitutional Area 3

Results as of: 3/31/2024

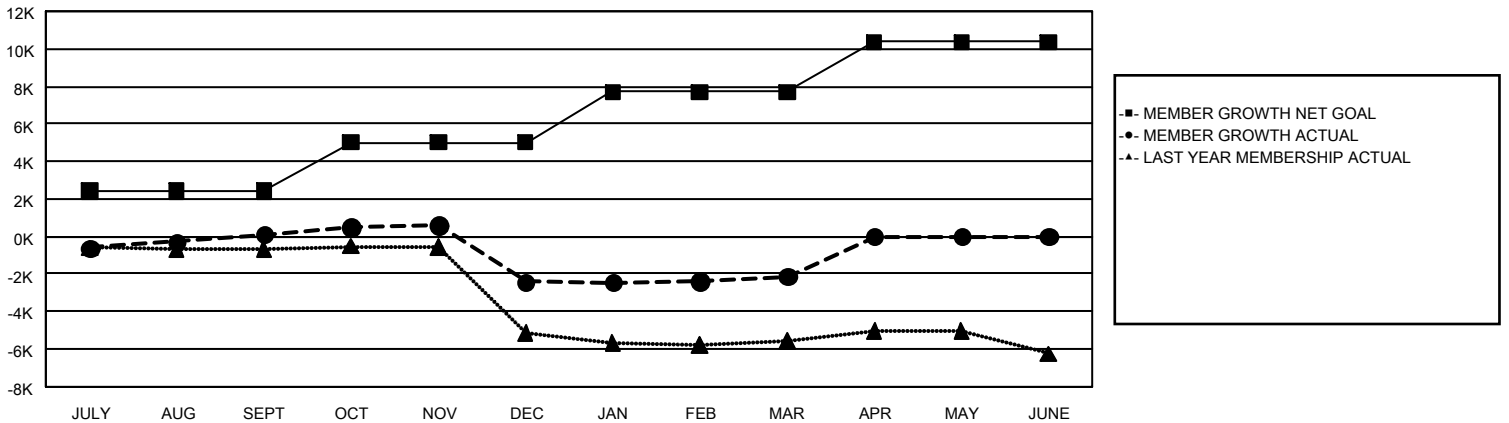
REPORT DOES NOT INCLUDE CLUBS IN UNDISTRICTED AREAS.

Clubs				Members			
RESULTS FOR 2023-2024				RESULTS FOR 2023-2024			
QUARTER	NEW CLUB GOAL	NEW CLUBS	DROPPED CLUBS	QUARTER	MEMBER GROWTH NET GOAL	MEMBER GROWTH ACTUAL	DROPPED MEMBERS ACTUAL (including transfers)
JULY/AUG/SEPT	40	22	38	JULY/AUG/SEPT	2,394	3,655	3,166
OCT/NOV/DEC	19	31	70	OCT/NOV/DEC	2,611	3,700	5,910
JAN/FEB/MAR	74	20	24	JAN/FEB/MAR	2,708	2,816	2,068
APR/MAY/JUNE	54	0	0	APR/MAY/JUNE	2,654	0	0

GOALS AND ACTUAL NEW CLUBS CUMULATIVE



GOALS AND ACTUAL MEMBERS CUMULATIVE



DROPPED CLUBS: 132	2,019 CLUBS OF 4,318 ADDED 1 OR MORE NEW MEMBERS	<u>GENDER DISTRIBUTION</u> MALE 47,255 (46.92%) FEMALE 53,408 (53.03%)
<u>DROPPED MEMBERS</u> DECEASED 579 CLUB CANCELLED 1,346 OTHER 9,219 <hr/> TOTAL 11,144	CLICK HERE FOR CUMULATIVE MEMBERSHIP DATA	TOTAL FAMILY UNIT MEMBERS 37,666 FAMILY MEMBERS PAYING HALF DUES 20,945